

2019 Grasshopper Outlook & Assistance Programs

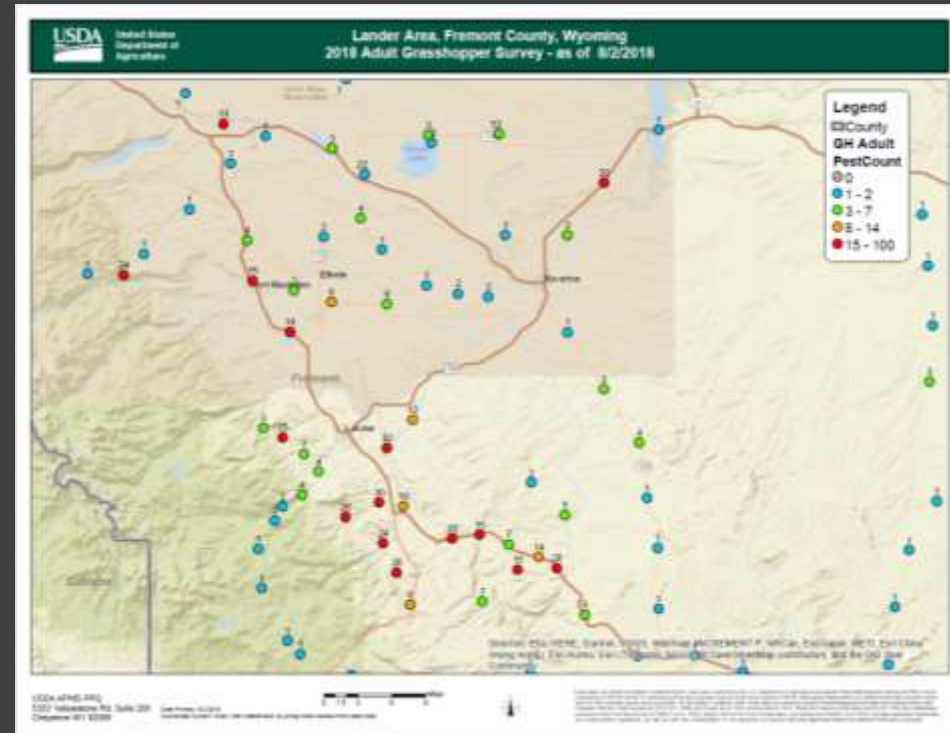
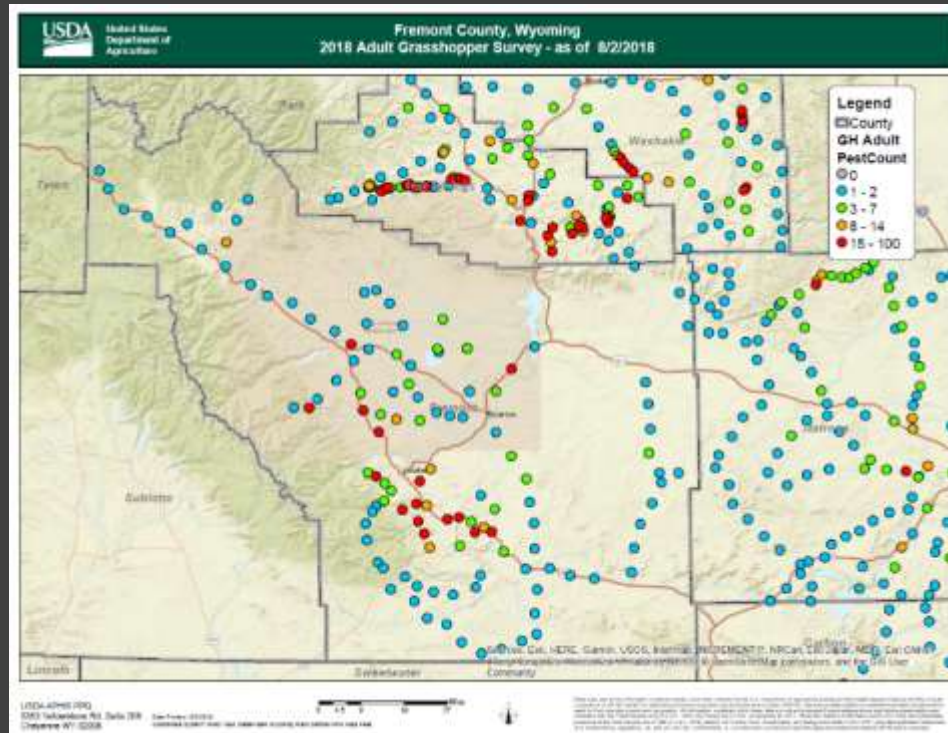
AARON FOSTER

307-332-1052

AFOSTER@WYOMING.COM



Outlook?



Outlook

2018 USDA APHIS Surveys

- Migratory Grasshopper (~80%)
 - Hatch ~May 15
 - Weeds, ornamentals, grains, grass, rangeland - (crop and rangeland)
 - Good bait acceptance
- Clearwinged Grasshopper
 - Hatch ~May 15
 - Grasses (some broadleaf) – (Rangeland and crop)
 - Good bait acceptance



Outlook

2018 USDA APHIS Surveys

- Twostriped Grasshopper
 - Hatch ~May 15 (extended)
 - Weeds, ornamentals, grains, grass, rangeland - (crops and rangeland)
 - Good bait acceptance
- Whitewiskered Grasshopper
 - Hatch ~May 15
 - Grass – (mostly rangeland)
 - Good bait acceptance
- Striped Grasshopper
 - Hatch ~May 15
 - Grass – (Rangeland)
 - Poor bait acceptance



Assistance Programs

FCWP Surveying

- Call early (May 15 – June 15) if suspect large numbers of grasshoppers
 - 332-1052
- Nymphs/Adults
- Use App – Info at FCWP.org

Equipment Rental

- Liquid insecticide sprayers
- Bait Spreaders



Assistance Programs

Treatment Consultation

- Rangeland/Pasture
- Non-Crop
- Crop Margins
- Limited T & O
- Crops – Consult with local agronomy centers and coops

Insecticide Cost Share (FCWP and Ag Dealer)

- 40% Cost Share on Carbaryl Bait, Carbaryl, Malathion, and Dimilin (RUP)
 - Prior to July 1, must verify grasshopper problems in alfalfa for cost share.
 - Other insecticides considered for crops with grasshopper verification

Assistance Programs

Insecticide Considerations (ALWAYS READ LABELS FIRST)!

1. EcoBran Bait
 - A. Small Acreage, Garden, Field margins, Rangeland
 - B. Selective
 - C. Bee safe
 - D. Early stages (nymphs)
 - E. Long residual

2. Carbaryl
 - A. Alfalfa (haying and grazing restrictions)
 - B. Grass (haying and grazing restrictions)
 - C. Rangeland/Non-Crop/Turf and Ornamental
 - D. Non-Selective
 - E. Bee hazards
 - F. RAATs Adaptable
 - G. Short residual (~7 days)

Assistance Programs

Insecticide Considerations (ALWAYS READ LABELS FIRST)!

1. Malathion
 - A. Alfalfa
 - B. Grass hay
 - C. Non-Crop
 - D. Non-Selective
 - E. Bee hazard
 - F. Contact killer
 - G. Short residual (1 day)

2. Dimilin (diflubenzuron)
 - A. Alfalfa (haying and grazing restrictions)
 - B. Grass (haying and grazing restrictions)
 - C. Rangeland/Non-Crop
 - D. More Selective
 - E. Reduced bee hazard
 - F. Growth regulator (stops molting)
 - G. Long residual (30 days)

Assistance Programs

Insecticide Considerations (ALWAYS READ LABELS FIRST)!

1. **Tempo SC Ultra** – Cyfluthrin

- A. Home/Turf/Ornamentals - No Vegetable Gardens - see specific treatment site for details.
- B. Some residual affect
- C. Site specific limitations on uses and applications
- D. Non-selective
- E. Good for small properties

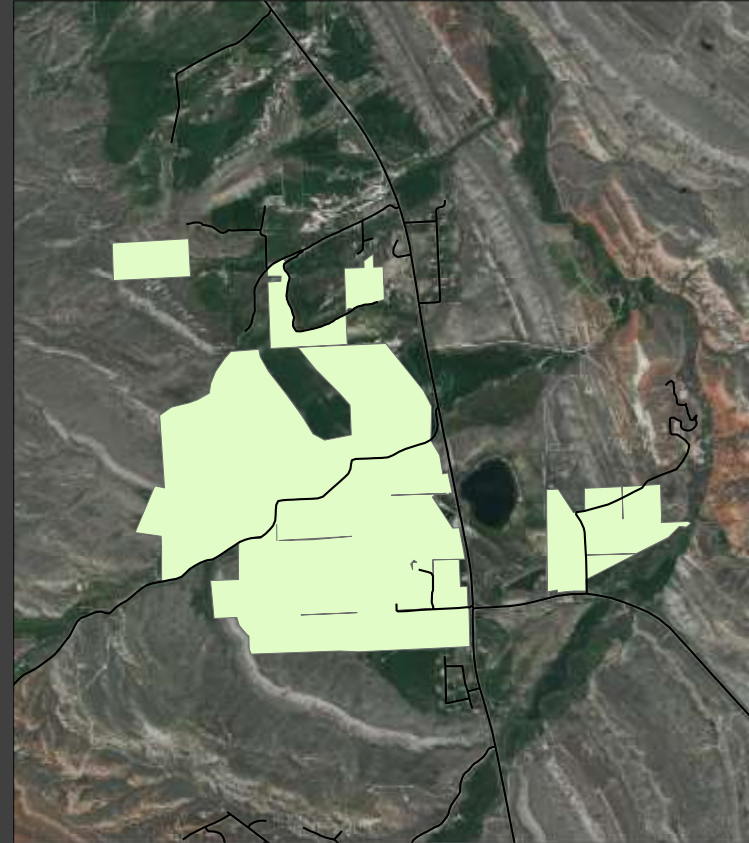
2. **Bifen 7.9** – Bifenthrin

- A. Home/Turf/Ornamentals - No Vegetable Gardens - see specific treatment site for details.
- B. Some residual affect
- C. Site specific limitations on uses and applications
- D. Non-selective
- E. Good for small properties

Assistance Program

Treatment Block Planning

- FCWP can help coordinate blocks for larger collaborative treatments
- If had large grasshopper numbers in 2018, contract FCWP to get involved in planning for 2019



Assistance Programs

USDA APHIS

- Federal Rangeland Program
- Block suppression treatments
 - Widespread outbreaks
 - Outbreak prevention
 - Ag land border protection
- Technical assistance

2019 Grasshopper Outlook & Assistance Programs

AARON FOSTER

307-332-1052

AFOSTER@WYOMING.COM

