



## Fremont County Weed and Pest Control District

Lander 307-332-1052 (office), 307-332-3709 (shop)  
 Riverton (307) 856-2192 · Dubois (307) 455-3180  
 fcwp@wyoming.com

# Field Bindweed

*Convolvulus arvensis*

Convolvulaceae (Morningglory family)

Field bindweed was introduced from Europe and has become a widespread weed problem in all parts of the U.S. except southeastern states. Because of its remarkable adaptability to different environmental conditions, it can be found at altitudes as high as 10,000 feet. It is a difficult weed to eradicate because of the long, deep taproot which can penetrate the soil to a depth of more than 10 feet and which gives rise to numerous long lateral roots.



K. George Beck & James Sebastian, CSU, Bugwood.org



FCWP



David Cappaert, Mich. State Univ., Bugwood.org



FCWP

**Growth Habit:** Perennial with an extensive root system, often climbing or forming dense tangled mats that can cling or climb.

**Leaves:** Green, oval shaped, notched opposite the prostrate stem with secondary leaves that become heart or arrow shaped.

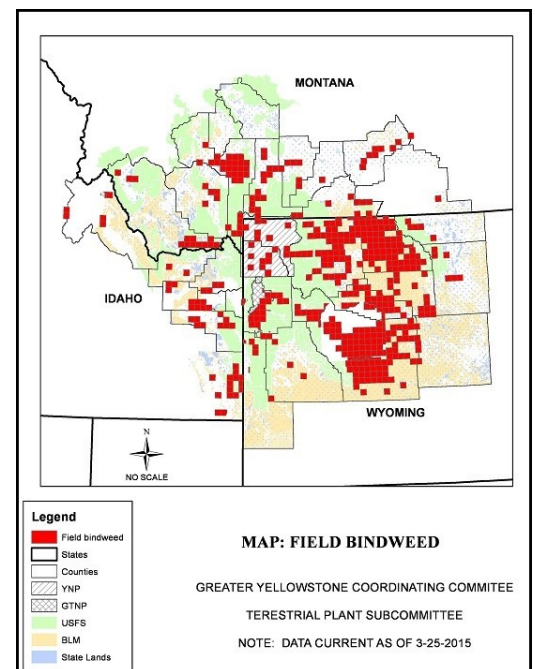
**Flowers:** Numerous white to light pink, bell- or trumpet-shaped, about 1 inch in diameter. Flowering period is from late June to fall. Fruit is a small, round capsule, usually four-seeded. Seeds can remain viable for as long as 50 years.

**Root:** Deep, penetrating with extensive horizontal roots that support the thick flowering mat aboveground. Broken roots will sprout new plants.

**Other:** Other common names include creeping Jenny, morningglory.

**Status:** State Designated Noxious Weed, Category 4 Fremont County. Widespread infestation, control and maintenance of current infestations.

**Control:** Can be treated with herbicides or grazed with goats, but difficult to eradicate once it becomes entrenched. Biological control has shown some success in suppression. FCWP offers a 40 percent Cost Share on chemicals for controlling this species. Contact your local weed and pest office for treatment recommendations.



GYCC/FCWP