



## Fremont County Weed and Pest Control District

Lander 307-332-1052 (office), 307-332-3709 (shop)  
 Riverton (307) 856-2192 · Dubois (307) 455-3180  
 fcwp@wyoming.com

# Perennial Pepperweed

*Lepidium latifolium*

Brassicaceae (Mustard family)

Perennial pepperweed is a native of southern Europe and western Asia but is now found in many parts of the U.S. The plant readily spreads from wet or waste areas, ditches, or roadsides into cropland, range or meadows and is not grazed by either livestock or wildlife.



Pedro Tenorio-Lezama, Bugwood.org



FCWP



Steve Dewey, Utah State Univ., Bugwood.org



FCWP

**Growth Habit:** Upright perennial up to 3 feet tall, numerous stems, spreading by seed and deep-seated rootstocks.

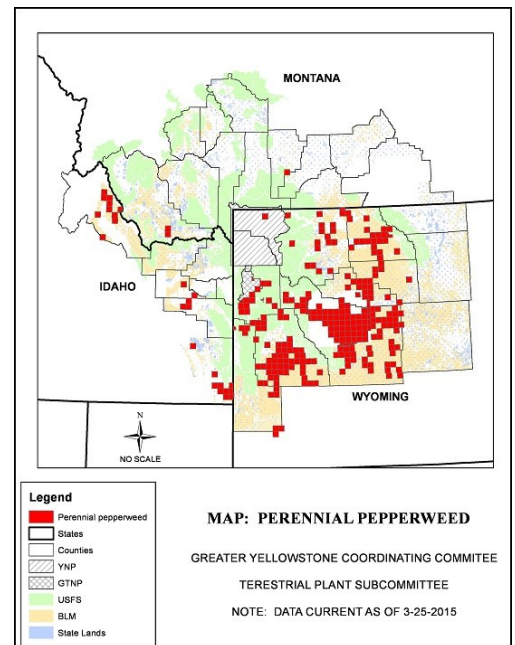
**Leaves:** Alternate, lance shaped, bright green to gray-green, waxy, smooth to toothed margins, basal leaves larger than upper leaves.

**Flower:** Raceme of small white flowers in dense clusters near branch ends. Each flower develops into an oval pod containing two small brownish seeds.

**Roots:** Deep-seated and spreading.

**Status:** State Designated Noxious Weed, Category 3 Fremont County. Regional, no tolerance of further spread, control and management of current infestations and aggressive control in other areas otherwise free of these weeds.

**Control:** Perennial pepperweed is difficult to control due to its extensive creeping root system and its waxy leaves that help the plant resist some chemical treatments. Best controlled with well-timed, efficient chemical applications. FCWP offers a 40 percent Cost Share on chemicals for controlling this species. Contact your local weed and pest office for further treatment recommendations.



GYCC/FCWP