



Fremont County Weed and Pest Control District

Lander 307-332-1052 (office), 307-332-3709 (shop)
 Riverton (307) 856-2192 · Dubois (307) 455-3180
 fcwp@wyoming.com

Skeletonleaf Bursage

Ambrosia tomentosa

Asteraceae (Sunflower family)

Skeletonleaf bursage is native to the plains region but considered noxious. It grows in cultivated fields, pastures, prairies and waste areas. Reproduces by root and seed.



Photos by Howard F. Schwartz, Colorado State University, Bugwood.org



Growth Habit: Bushy perennial, 4 to 18 inches tall, with extensive creeping rootstocks.

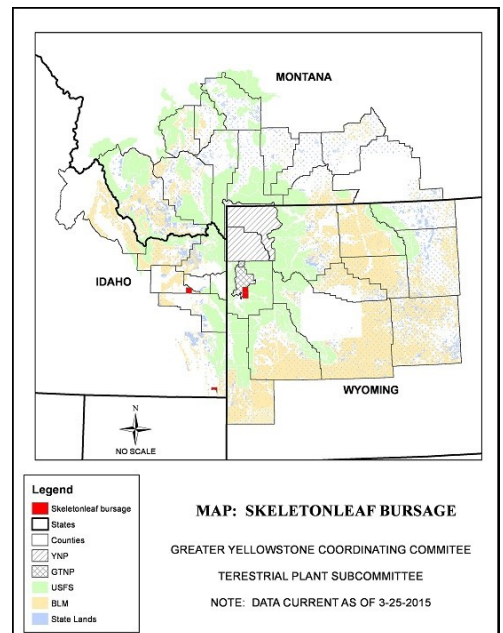
Leaves: Deeply lobed and toothed, alternate, 2 to 5 inches long; upper surface smooth and dark green, lower surface silvery-green covered with minute white hairs.

Flowers: Male and female flowers are found in separate locations on the plant. Male inflorescence is stalked and elongated or spike-like. Female flowers are found in clusters or singular in the axils of the upper leaves.

Roots: Taproot and aggressive creeping rootstocks that sprout new plants.

Status: State Designated Noxious Weed, Category 4 Fremont County.

Control: Chemical controls are recommended over mechanical. Tilling only serves to produce additional plants. FCWP offers a 40 percent Cost Share on chemicals for controlling this species. Contact your local weed and pest office for further treatment recommendations.



GYCC/FCWP